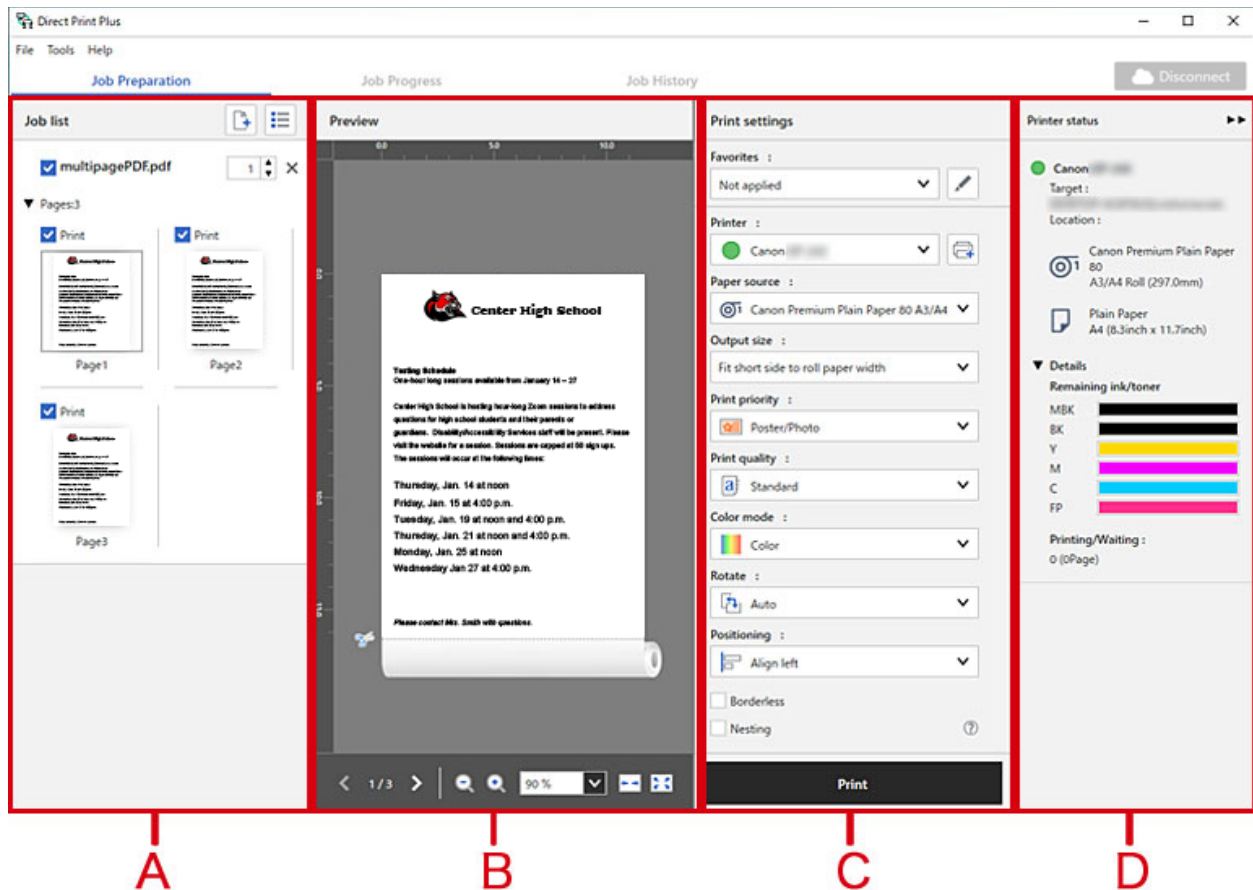


BASIC OPERATIONS & FEATURES

The Direct Print Plus home screen can be operated from the left side to the right side to match the workflow, allowing you to print while checking the layout. You can also select the features you need for operation from the menu bar.



A: If you drag and drop to add the files you want to print, thumbnails will be displayed.

B: Check the print preview of the files you selected.

C: Set the media type and image quality.

D: Check the printer status.

- To easily adjust image size under “Output Size” try selecting “Fit short side to roll paper width” or “Fit long side to roll paper width”
- You can print PDF documents and drawings, JPEG and TIFF images, and HP-GL/2 drawings without opening the corresponding applications.

- You can preview the print image and be warned in advance of errors by retrieving information from the connected printer.
- You can print multiple files at once, enabling you to efficiently print large volumes of drawings and images.
- You can save frequently used print settings. You can also print with saved settings.
- Printing history is saved for a specified period of time. You can also select jobs to print from the saved print history.

»» Important

- File formats that can be previewed and printed are as follows: JPEG, TIFF, PDF (excluding password-protected PDFs), and HP-GL/2.
- In HP-GL/2 previews, the area where the data exists is displayed with borders and diagonal lines.

LIMITATIONS WHEN PRINTING PDF FILES

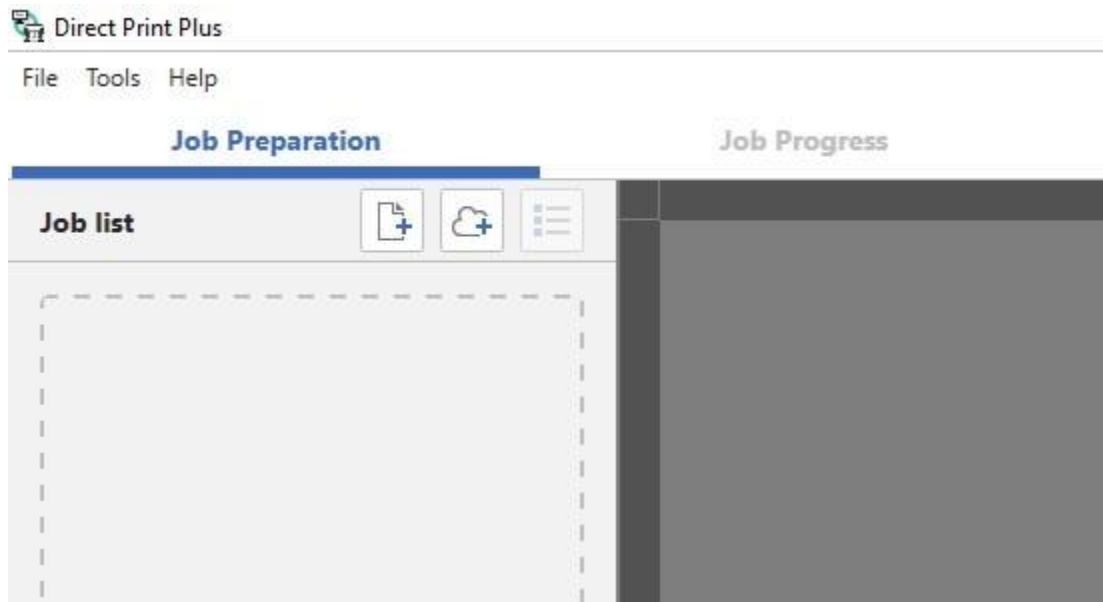
These are limitations that apply when using Direct Print Plus to print PDF files that contain the below image processing.


Caution is needed when using Direct Print Plus to print PDF files created with Adobe Illustrator and other applications for graphical purposes.

- Transparency processing: In some cases, transparency may not be processed as intended.
- Drop shadows: In some cases, drop shadow effects (shadow effects applied to text, shapes, etc.) applied to objects placed on rectangles with transparency processing may not be processed correctly.
- Overprinting: The overlapping parts of images will not be printed as intended.
- PDF with security settings cannot be printed.
- 16-bit data or JPEG 2000 image data with transparency settings images cannot be printed.
- PostScript data images cannot be printed.
- Halftone images cannot be printed.
- Data with comments added images cannot be printed if there is no data for displaying comments.

ADD FILES FROM YOUR COMPUTER

You can print files saved on a local drive on your computer.




1. Select  on the home screen
2. A File Explorer window will open. Find and select the image file you wish to add and click **Open**. You can also drag image files onto the dotted area on the left side of the Direct Print Plus window

ADD FILES FROM THE CLOUD

(Google Drive, Dropbox, OneDrive, or Box)

You can print files saved in cloud storage.

1. Select  on the home screen
When logging in to the cloud service, you need to confirm the terms of use and privacy policy of each service, and agree to them.

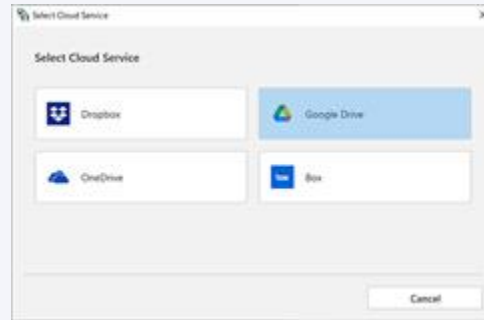
2. Select the cloud service you want to use

Microsoft Edge starts.

Enter your user ID and password, and follow the instructions on the screen.

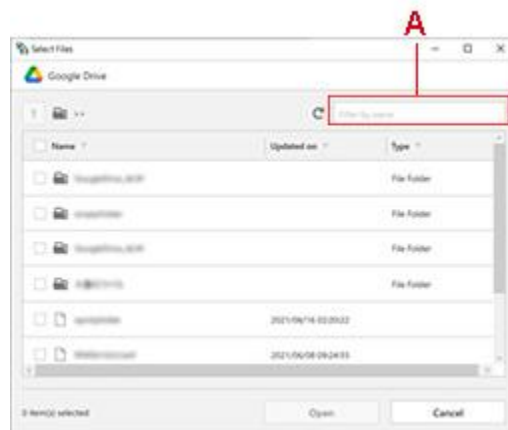
»»» Note

- a. This screen is an example. The displayed web service will differ depending on your country or region.



3. Select the files you want to print

Select the folder or file you want to print, and then click **Open** to add it to the **Job list**.



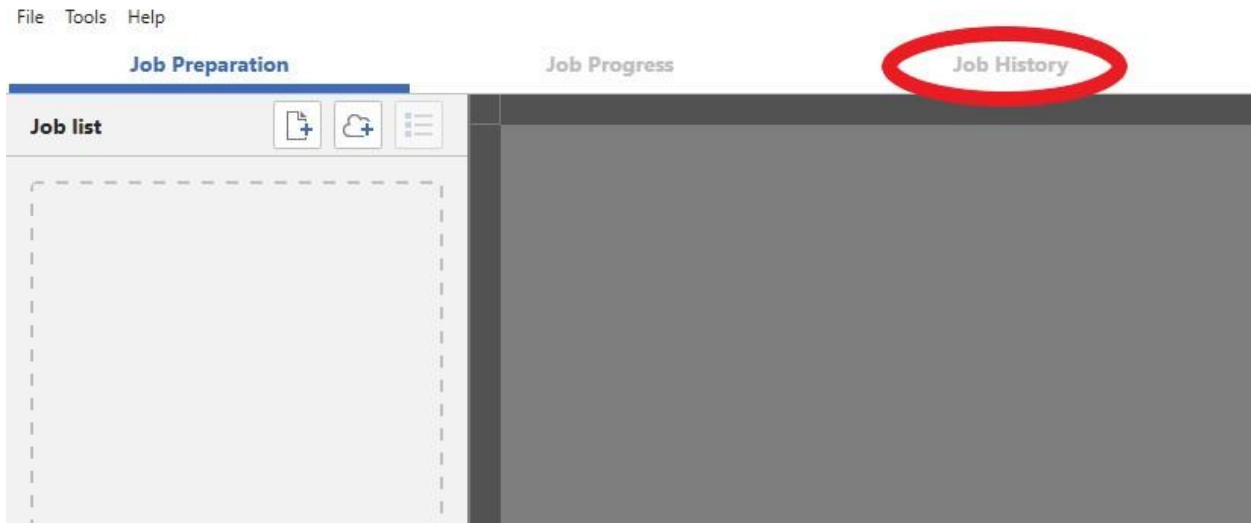
»»» Note

- a. You can enter text to search for folder or file names. If you enter text in the (A) section, folders and files that contain that text will be displayed.

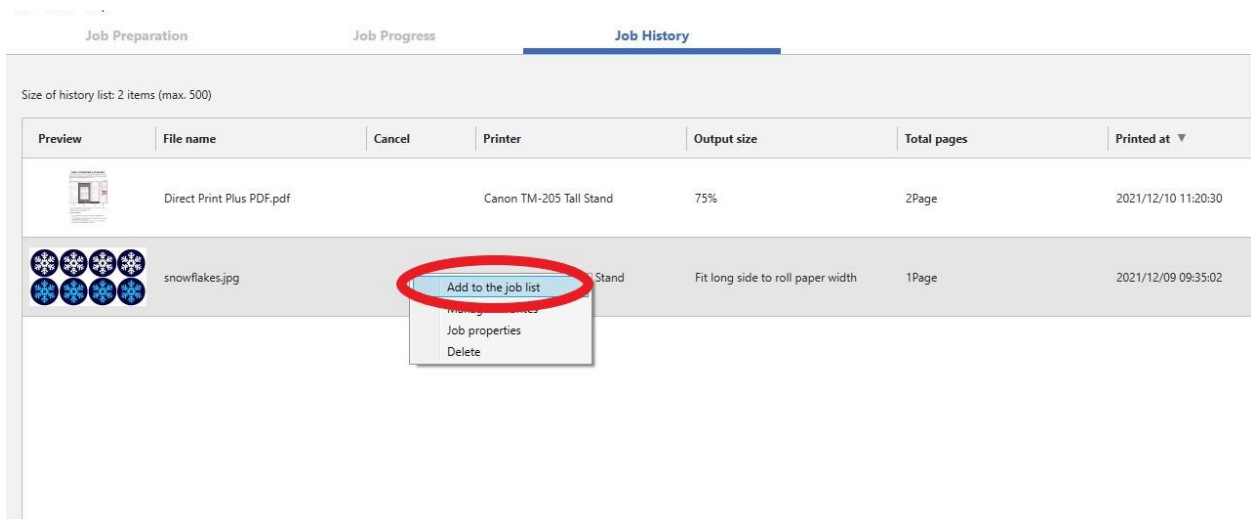
PRINT FROM RECENT JOB HISTORY

You can print files again with the same settings you've recently printed.

1. Select **Job History** on the home screen



2. Find the print job you want to reprint and right-click and select **Add to the job list**

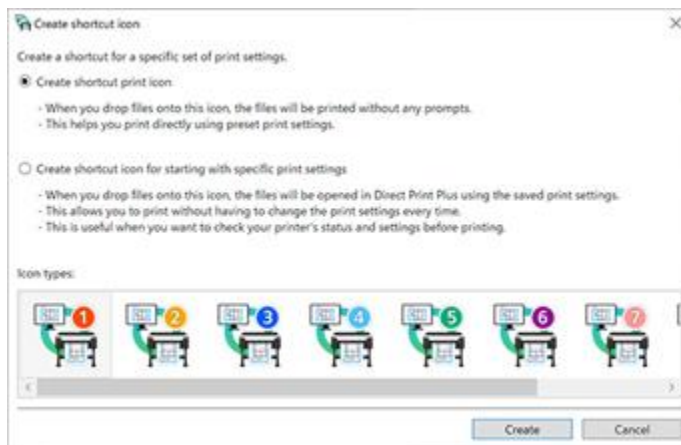


ADVANCED FEATURES

CREATING SHORTCUT PRINT ICONS

If you drop printing data, you can create icons that can be used for printing. Follow the procedure below to create Shortcut print icons.

1. Open the home screen
2. Select the printer you want to use to print the file from the **Printer** pulldown menu
3. Configure the required settings in the print settings area
4. Select **Create shortcut icon** from **Tools** in the menu bar



The **Create shortcut icon** dialog box will open.

5. Select the icon type you want to create, and then click **Create**
The **Save as** dialog box will open.
6. Enter the icon name for the icon in **File name**, and then click **Save**



The icon you created will be added to the folder specified in the **Save as** dialog box.

ALIGN EFFICIENTLY ON PAPER AND PRINT (NESTING)

Print multiple charts and other data by aligning them efficiently.



1. Add a checkmark to **Nesting** in **Print settings** on the home screen (Refer to "Basic Operations (Home Screen)")
The selected files will automatically undergo the layout process.
2. Configure settings and print (Try adjusting the scale under "Output Size" and using image rotation to get the best results)

»» Note

- Nesting can be performed when there are multiple pages in a single file.
- To configure settings between files, enter a number for Spacing between pages when nesting in Preferences.
- If you want to add page borders when nesting, add a checkmark to Enable page frames when nesting in Preferences.