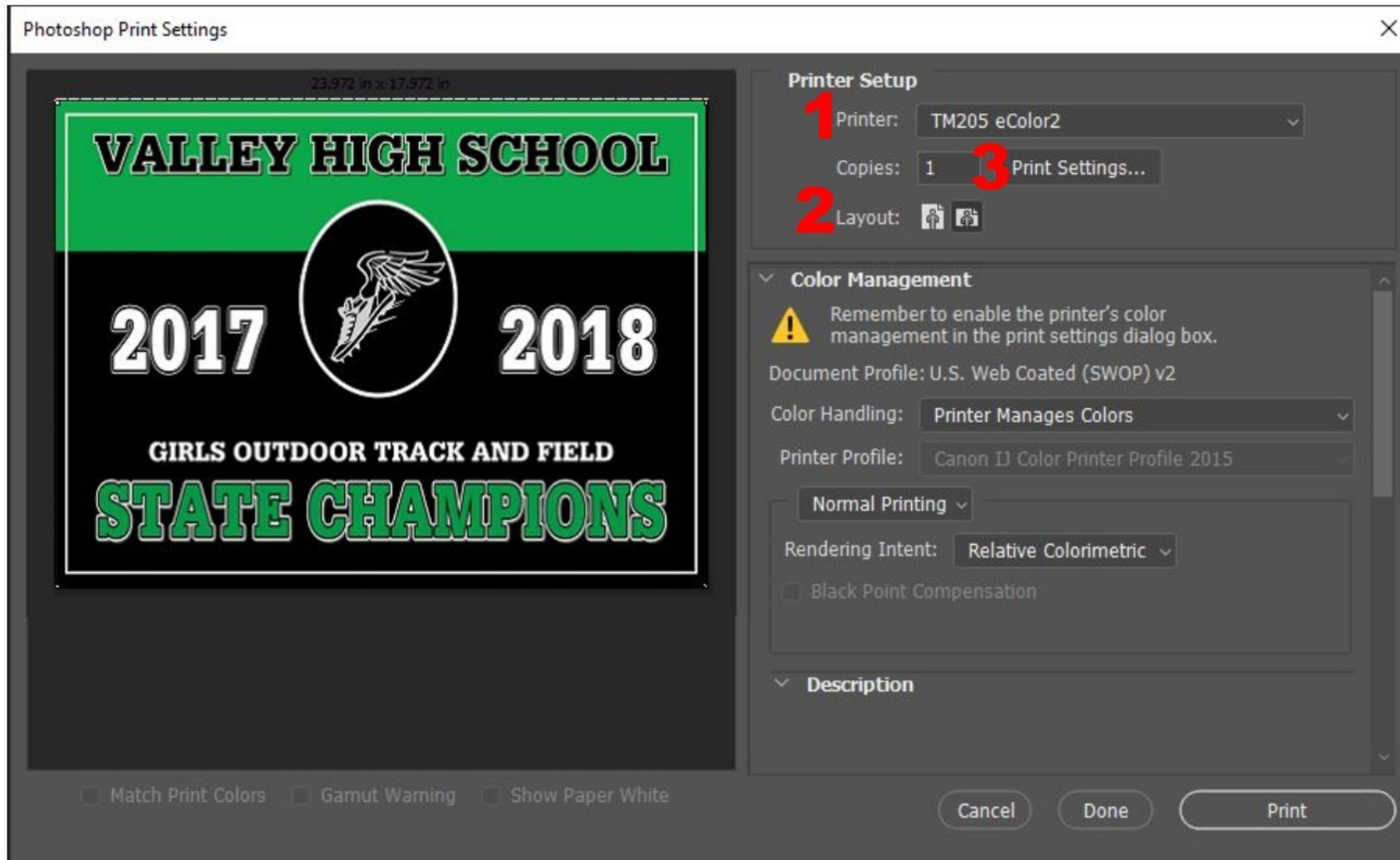
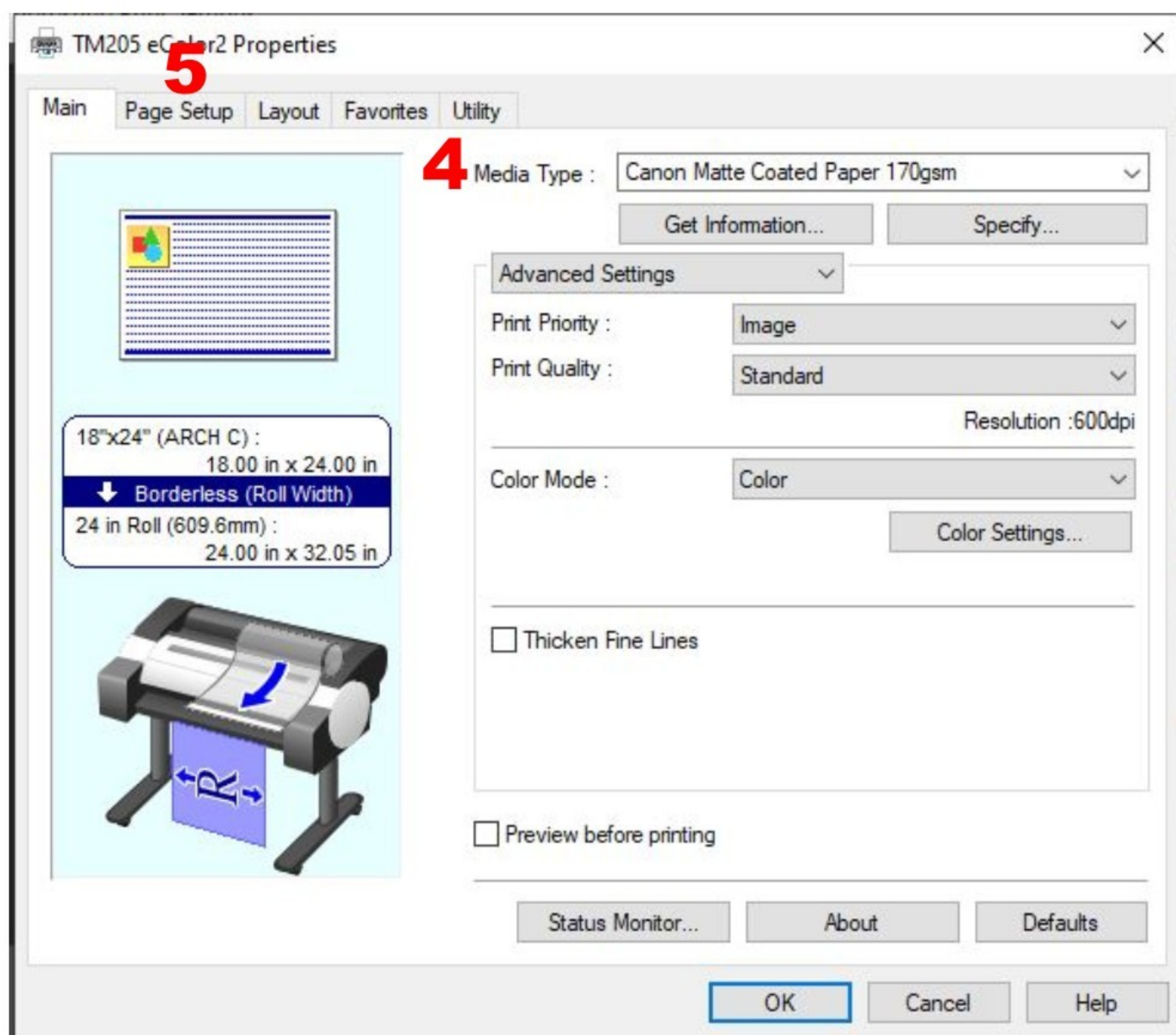


# Printing on eColor from Photoshop:



File > Print

- 1** Choose correct printer
- 2** Choose Landscape / Portrait
- 3** Print Settings

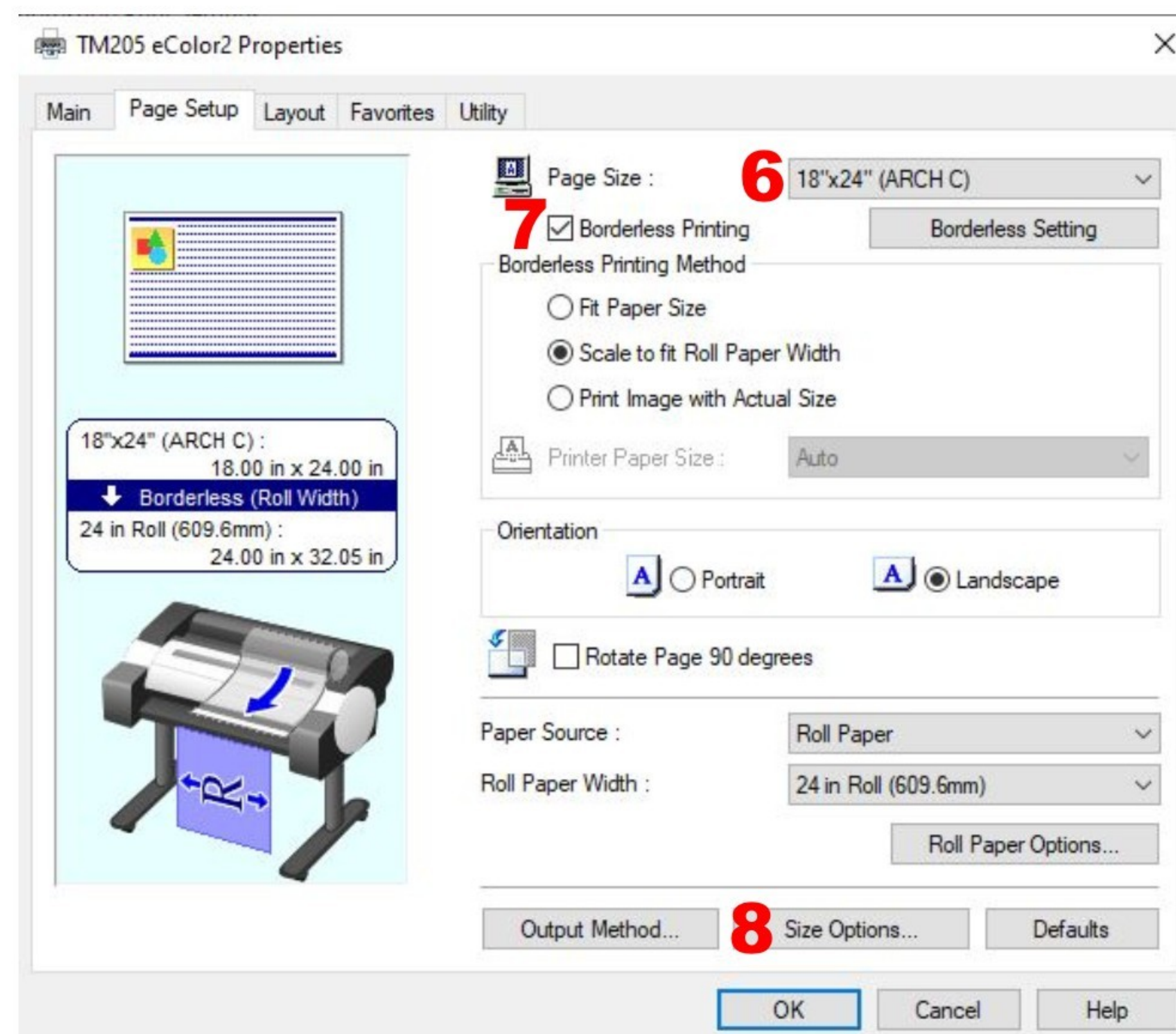


**4** Main tab > Media Type Drop Down Menu

For:

- Matte Paper > Coated > Matte Coated 170 gsm
- Glossy Paper > Photo > Glossy Photo 170 gsm
- Charlie Adhesive > Sign > Adhesive Synthetic
- Banner Vinyl > Sign > Synthetic

**5** Page Setup tab > Page Size



**6** Page Size Drop Down Menu > Arch D 24x36  
Arch C 18x24

Or Custom Size:

*Make sure, if you have a 24 in paper, one side is 24 and if you have a 36 in paper, one side is 36.*

**7** Check off Borderless Printing

**8** Size Options > Choose Paper Size > Click OK > Print